

CPCL 97-2730

Sugarcane cultivar ‘CPCL 97-2730’ was released in 2008 for sand soil in Florida. Basic information (Table 1) and information on disease and yield (Table 2) are provided in the tables below. Yields are an average of plant cane, first and second ratoon. Numbers in the table 2 represent actual yield and number in parentheses is the percent difference from commercial check, CP 78-1628 planted in same trial.

Abbreviations:

- **Tonnage:** Sugarcane biomass yield in tons/acre
 - **CRS:** Commercial Recoverable Sucrose (lbs of sugar/ton of cane)
 - **TSA:** Tons of sugar per acre
 - **Economic index:** Profitability based on crop value after deducting harvesting and transportation cost
 - **Diseases:** SCMV, Sugar Cane Mosaic Virus; RSD, Ratoon Stunting Disease; SCYLV, Sugar Cane Yellow Leaf Virus
- R=Resistant; MR=Moderately resistant; MS=Moderately susceptible; S=Susceptible
- **Bru1 gene:** + is present; - is absent

Table 1

Basic Information	
Release date	June-2008
Soil type	Sand
Parents	CL 75-0853 x CL 88-4730
Freeze tolerance	Good
Flowering	None to light beginning in late December
Best features	Moderately resistant to rusts and smut, high tonnage, CRS, TSA, and economic index
Limiting features	Lower stalk numbers than CP 78-1628, poor germination when planted late
Other issues	

Table 2

Yield and disease information	
Trait	CPCL 97-2730 (Yields compared to CP 78-1628)
Tonnage	47.8 (+8%)
CRS	267.9 (+3%)
TSA	6.4 (+10%)
Economic Index	\$766 (+16%)
Fiber	9.5%
Brown rust	MR
<i>Bru1</i>	+
Orange rust	MR
Leaf scald	MR
Smut	MR
SCMV	R
RSD	R
SCYLV	S



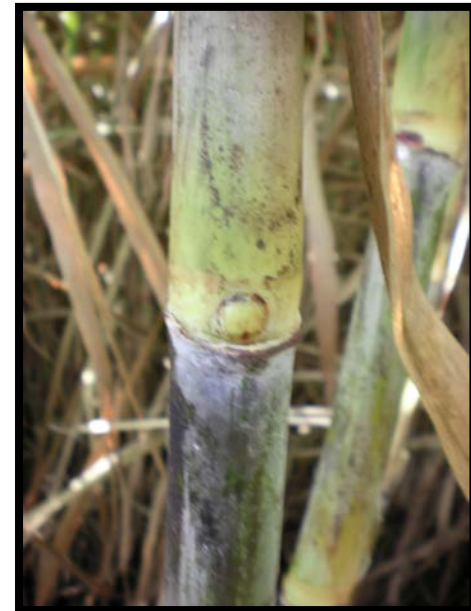
CPCL 97-2730 in early growth stage in sand soil



CPCL 97-2730 in late growth stage in sand soil



CPCL 97-2730 upper stalk and canopy



CPCL 97-2730 bud