

CP 06-2400

Sugarcane cultivar ‘CP 06-2400’ was released in 2013 for muck soil in Florida. Basic information (Table 1) and information on disease and yield (Table 2) are provided in the tables below. Yields are an average of plant cane, first and second ratoon. Numbers in the table 2 represent actual yield and number in parentheses is the percent difference from commercial check, CP 89-2143 planted in same trial.

Abbreviations:

- **Tonnage:** Sugarcane biomass yield in tons/acre
 - **CRS:** Commercial Recoverable Sucrose (lbs of sugar/ton of cane)
 - **TSA:** Tons of sugar per acre
 - **Economic index:** Profitability based on crop value after deducting harvesting and transportation cost
 - **Diseases:** SCMV, Sugar Cane Mosaic Virus; RSD, Ratoon Stunting Disease; SCYLV, Sugar Cane Yellow Leaf Virus
- R=Resistant; MR=Moderately resistant; MS=Moderately susceptible; S=Susceptible
- **Bru1 gene:** + is present; - is absent

Table 1

Basic Information	
Release date	June-2013
Soil type	Muck
Parents	CP 94-1100 x 03 P 29
Freeze tolerance	Moderate to Good
Flowering	Generally none
Best features	Resistant to brown rust, smut, and SCMV
Limiting features	Poor germination in wet conditions, susceptible to RSD.
Other issues	light to moderate ring spot, light to moderate rust mite levels, and sometimes light lacebug levels in the fall.

Table 2

Yield and disease information	
Parameter	CP 06-2400 (Yields compared to CP 89-2143)
Tonnage	85.8 (+36%)
CRS	218.9 (-8%)
TSA	9.5 (+24%)
Economic Index	\$1421 (+17%)
Fiber	10.7%
Brown rust	R
<i>Bru1</i>	+
Orange rust	MR
Leaf scald	MR
Smut	R
SCMV	R
RSD	S
SCYLV	S



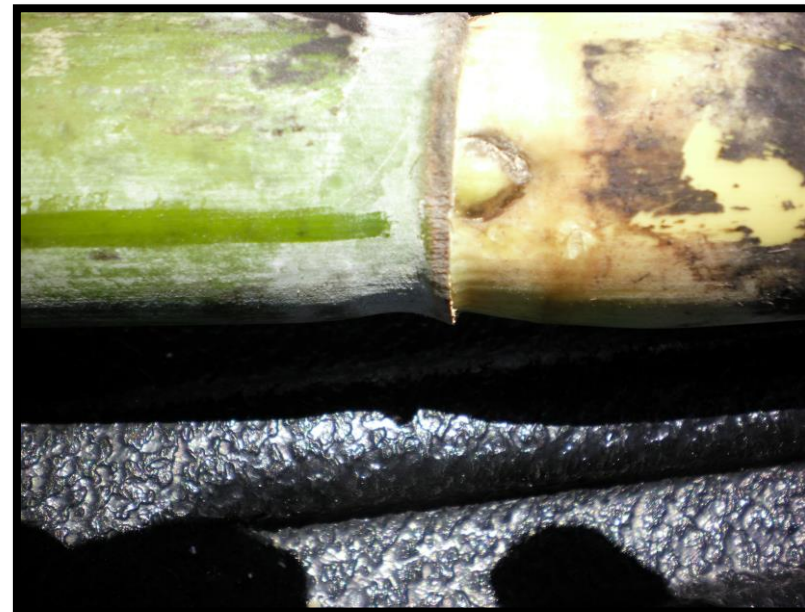
CP 06-2400 at early growth stage in muck soil



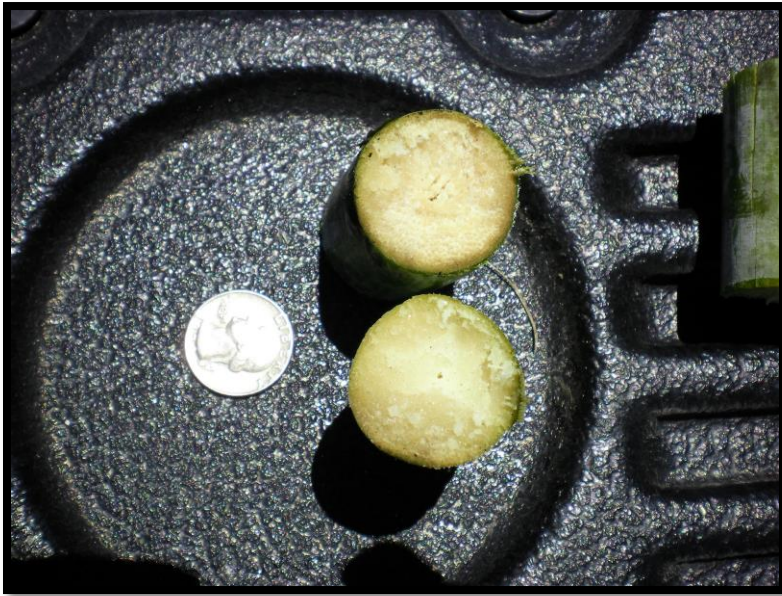
CP 06-2400 at late growth stage in muck soil



CP 06-2400 top with auricles



CP 06-2400 bud



CP 06-2400 internode cross-section (diameter compared to quarter dollar)