

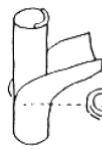
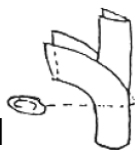


# Hairy ligule



## STEM SHAPE

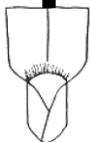
Flattened



Rounded

## BLADE HAIR

Upper surface sandpapery  
Blades without hair  
Collar margin sometimes hairy



**Field Sandbur**

Bending and rooting  
at lower nodes



**Crowfootgrass**

## BLADE HAIR

Blade with hair

Blade with little  
or no hair



Perennial

**Napiergrass**

Annual

## ROOT SYSTEM

Perennial

Sheath margins with  
no hair

Stolon root system  
Tufts of hair at  
base of ligule



No bending and rooting  
at lower nodes



**Fall panicum**



**Bermudagrass**



# Membranous ligule



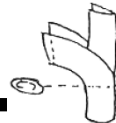
Auricles absent

## SHEATH MARGINS

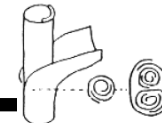


Split with overlapping margins

## STEM SHAPE



Flattened



Rounded

## ROOT SYSTEM

Annual



*Goosegrass*

Weak perennial

Annual

## BLADE SHAPE

Blade midrib white above and prominent below



*Sorghum-almum*

First blade is long and narrow

First blade wide and often blunt

## SHEATH MARGINS

Sheath margin not hairy

Sheath margin hairy

Midrib not green

Green midrib



*Bearded sprangletop*



*Amazon sprangletop*



*Red sprangletop*



*Southern crabgrass*



*Smooth crabgrass*

**STEM SHAPE**

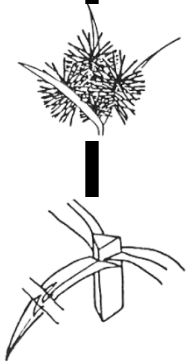


**LEAF**

Gradual taper

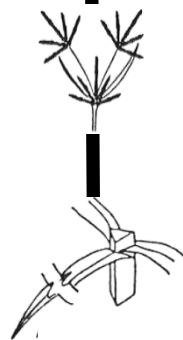
Sharp point

Inflorescence yellow



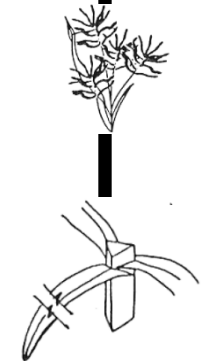
*Yellow nutsedge*

Inflorescence green



*Annual nutsedge*

Inflorescence purple



*Purple nutsedge*